

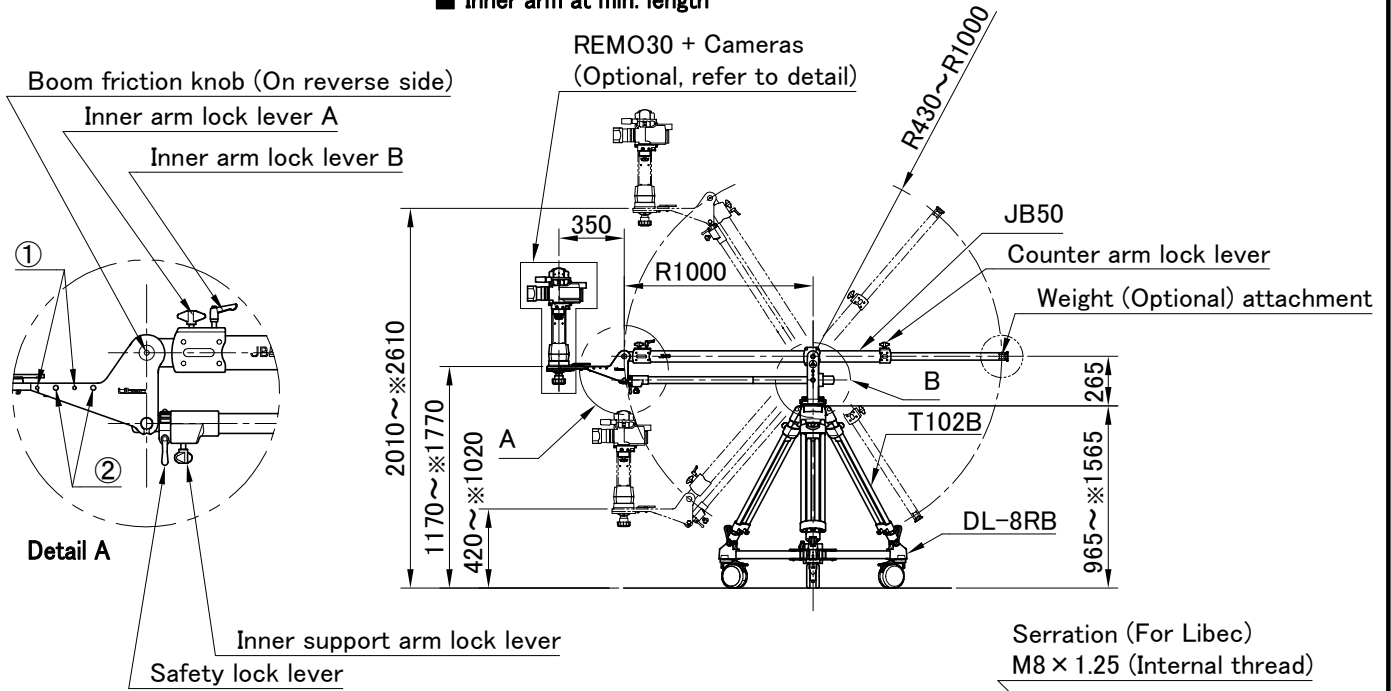
System	JB50 (Jib arm) + T102B (Tripod) + DL-8RB (Dolly)		
Payload	20 kg / 44.0 lb (Inner arm at min. length)	Camera internal thread	① 1/4-20UNC (On both side)
	10 kg / 22.0 lb (Inner arm at max. length)		② 3/8-16UNC (On both side)
Weight	28 kg / 61.7 lb (Excluding weight kit)	Boom friction	Continuous adjustable
Head attachment	φ 100 mm , φ 75 mm (Adapter)	Pan friction	Continuous adjustable
Tripod attachment	φ 100 mm	Weight kit (Optional)	30 kg (WEIGHT 30 KIT : 5 kg x 4 + 2.5 kg x 4)

Remarks

※Denote the Max. extended length of T102B tripod.

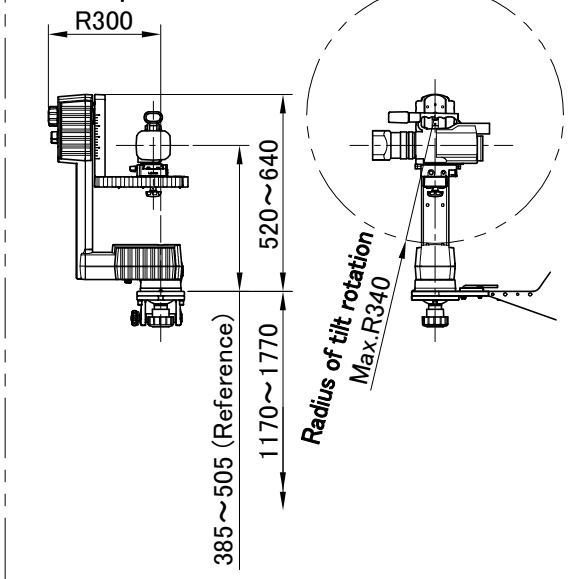
■ Exterior Dimensions (mm)

■ Inner arm at min. length

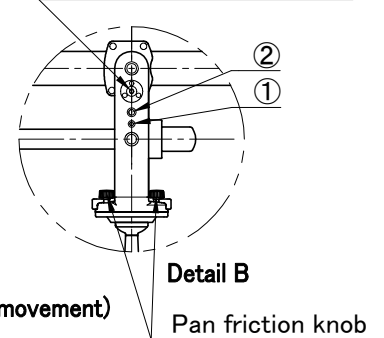


■ REMO30 + Cameras (Optional)

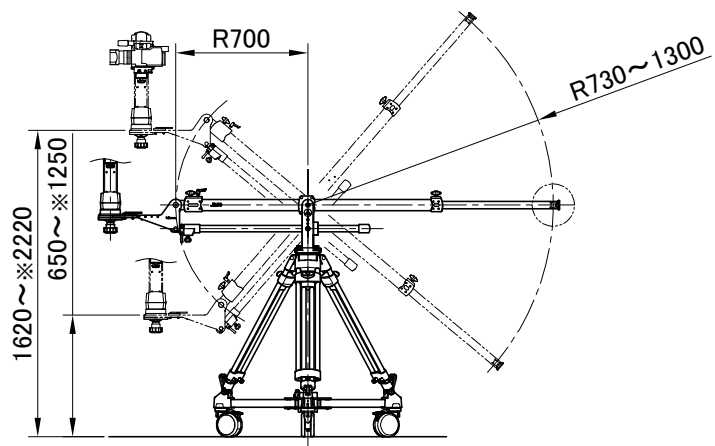
Radius of pan rotation



Serration (For Libec)
M8 x 1.25 (Internal thread)

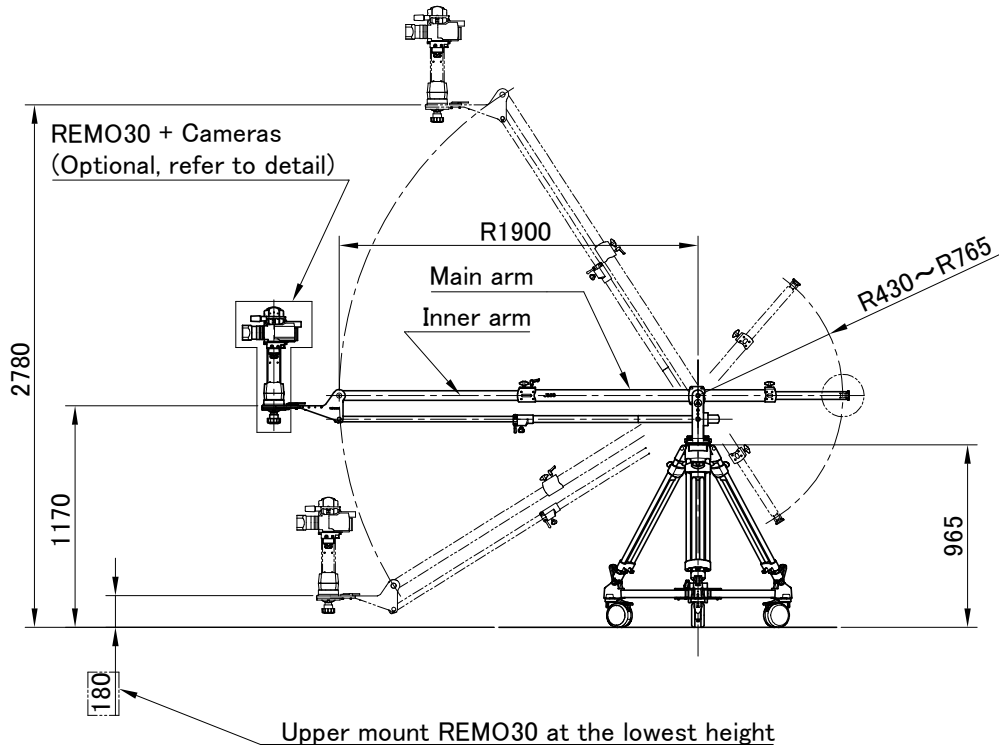


■ Main arm at min. length (300 mm movement)



■ Exterior Dimensions (mm)

■ Inner arm at max. length : T102B tripod at min. height



■ Inner arm at max. length : T102B tripod at max. height

